
Facilities Update

Construction Progress

Northridge Elementary Addition and Renovation

Elevator

- Elevator shaft has been sheet rocked and fire taped.
- Elevator installation to begin this week.

New Entrances

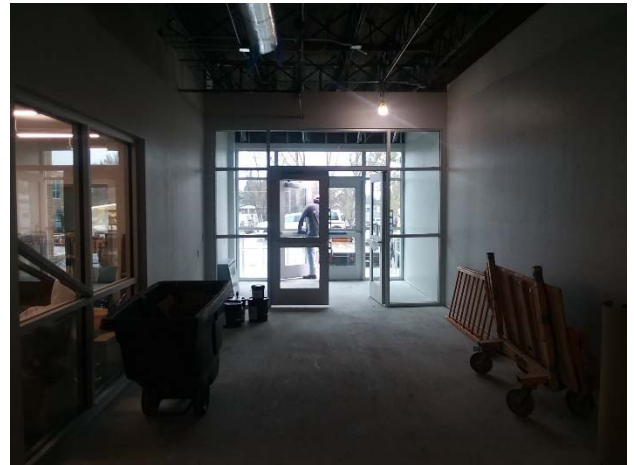
- All doors and windows are installed.
- Ceiling grid and flooring to begin this week.

Lower Level Restrooms

- Tile and flooring are complete.
- Partitions are being installed this week.
- Fixtures to be hung this week.

Upper Level Restrooms

- Taping and texturing to be completed this week.



New Elementary Schools

Interiors

- Visited Sunrise and Lincoln/Liberty to review current interiors
- Met with staff on casework
 - Child nutrition and custodial
 - Music
 - Special Needs
 - Office
 - Classrooms
- Elevator

Exterior

- Reviewed exterior concepts
- Schools are the same but will look unique based on colors and textures

BISMARCK PUBLIC SCHOOLS

Building Fund

2020-21 Revenues and Expenditures
October 31, 2020

Beginning Fund Balance - July 1, 2020		\$ (1,509,563)
<u>Revenue For FY-21:</u>		
Property Tax Receipts	\$ 62,987	
Special Assessments	7,220	
Fundraising	95,060	
Interest Income/Misc.	930	
Total Revenue	\$ 166,196	<u>166,196</u>
Total Funds Available		\$ (1,343,367)
<u>Expenditures For FY-21:</u>		
Bond Payment		
Bond Professional Services	\$ -	
Bank Fees	1,875	
Misc Projects	81,786	
BHS Construction	202,029	
Northridge Elementary School	1,152,482	
2022 Elementary Schools	62,361	
Land Purchases	1,114,975	
Special Assessments	-	
Total Expenditures	2,615,507	<u>2,615,507</u>
Fund Balance as of	October 31, 2020	\$ (3,958,874)

Special Assessments

Beginning Balance - July 1, 2020		37,235
<u>Revenue For FY-21:</u>		
Property Tax Receipts		
Total Revenue		<u>7,220</u>
Total Funds Available		\$ 44,455
<u>Expenditures For FY-21:</u>		
Minimum Payment		
Payment towards Balance		
Total Expenditures	\$ -	<u>\$ -</u>
Balance as of	October 31, 2020	\$ 44,455
Current Balance	\$ 2,651,969	

Project Detail Expenditures

October 31, 2020

Bismarck High School - (\$18,375,776)

Change Orders To Date	Current FY	Project Total
	\$	\$ 179,190
Construction Expenses	\$ 202,029	\$ 15,906,978
Fees		\$ 1,252,677
FFE & Technology		\$ 120,809
Misc (Testing, Surveying)		\$ 107,287
Total	\$ 202,029	\$ 17,387,752

Northridge Elementary School - (\$7,659,288)

Change Orders To Date	Current FY	Project Total
	\$	\$ 138,962
Construction Expenses	\$ 1,151,831	\$ 6,632,968
Fees		\$ 608,340
FFE & Technology	\$ 651	\$ 108,810
Misc (Testing, Surveying)		\$ 58,123
Total	\$ 1,152,482	\$ 7,408,242

NW Elementary School

Change Orders To Date	Current FY	Project Total
	\$	\$ -
Construction Expenses	\$ -	\$ -
Fees	\$ 56,250	\$ 56,250
FFE & Technology	\$ -	\$ -
Misc (Testing, Surveying)	\$ 5,030	\$ 7,403
Site Work	\$ -	\$ -
Total	\$ 61,280	\$ 63,653

NE Elementary School

Change Orders To Date	Current FY	Project Total
	\$	\$ -
Construction Expenses		\$ -
Fees		\$ -
FFE & Technology		\$ -
Misc (Testing, Surveying)	\$ 1,080	\$ 3,453
Site Work		\$ -
Total	\$ 1,080	\$ 3,453