
Facilities Update

Northridge Elementary Addition and Renovation

Office Administration Area & Media Center

- Painting is ongoing.
- Ceiling grid is complete.
- Casework is being installed.
- Ductwork is installed and insulated.
- New aluminum storefront entrances have been installed.
- New exit door has been cut in and masonry patched in.



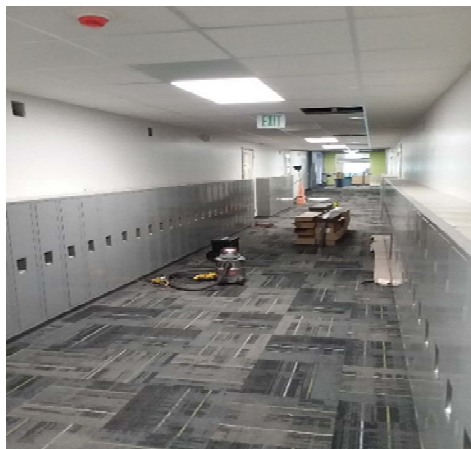
Staff room



Admin area

Corridors

- Painting is complete.
- Ceiling grid is installed.
- Lockers are being installed.





Parking Lot

- Curbs are finished.
- Paving is ongoing.

Lower Gym Area

- Walls have been insulated.
- Ductwork is installed and insulated.
- Corridor has been sheet rocked.

NW Elementary School

- Plat is approved.
- Site design work continues.
- Closing should happen in September.

NE Elementary School

- Plat is being reviewed this week to determine next steps.
- Site design work continues.
- Closing should happen in November.