

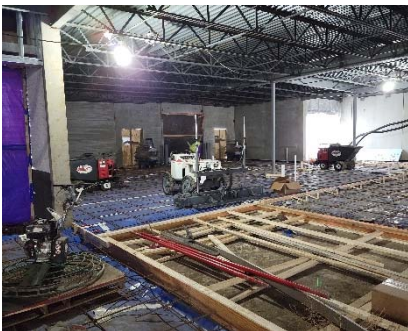
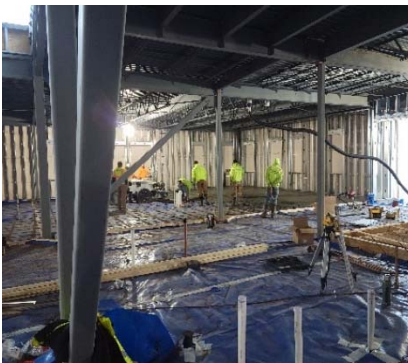
---

## Facilities Update

### Construction Progress

#### Elk Ridge

- Concrete pour to start in Area E.
- Prepping Area A for concrete.
- Setting drains in Area A.
- Spray foam to start next week.
- Roofing continues in Area A and Area E.
- Interior walls to begin after floors are poured.
- Sheetrock to start end of month.



## Silver Ranch

- Working on steel tie-ins and concrete slab prep.
- Exterior framing in Area C then moving on to Area E.
- Rough in Area A under Mezzanine.
- Spray foam as needed when temperature cooperates.
- Roofing prep and roofing ongoing.
- Interior framing will follow concrete floor.
- Mechanical & Electrical rough in to start in Area A.
- Interior drywall and finished to begin at the end of the month.





BISMARCK PUBLIC SCHOOLS

# Building Fund

2021-22 Revenues and Expenditures  
December 21, 2021

Beginning Fund Balance - July 1, 2021		\$	28,992,108
<u>Revenue For FY-21:</u>			
Property Tax Receipts	\$	109,130	
Special Assessments		24,018	
Fundraising		173,892	
Building Fund Transfer		636,111	
Interest Income/Misc.		32	
Total Revenue	\$	943,183	<u>943,183</u>
Total Funds Available			\$ 29,935,291
<u>Expenditures For FY-21:</u>			
Bond Payment	\$	398,915	
Elk Ridge Elementary School		4,503,137	
Silver Ranch Elementary School		4,471,518	
Legacy High School Addition		91,176	
CTE Project		49,000	
Energy Project		2,719,791	
Misc Projects		155,199	
Special Assessments		390,434	
Total Expenditures	\$	12,779,170	<u>12,779,170</u>
Fund Balance as of	December 21, 2021		\$ 17,156,121

---

## Special Assessments

Beginning Balance - July 1, 2021			10,711
<u>Revenue For FY-21:</u>			
Property Tax Receipts	\$	24,018.15	
Total Revenue	\$	24,018.15	<u>24,018</u>
Total Funds Available			\$ 34,729
<u>Expenditures For FY-21:</u>			
Minimum Payment	\$	390,434.31	
Payment towards Balance			
Total Expenditures	\$	390,434.31	<u>\$ 390,434.31</u>
Balance as of	December 21, 2021		\$ (355,705)
Current Balance		\$	<u>1,952,588</u>



# Project Detail Expenditures

December 21, 2021

---

## Elk Ridge Elementary School

	Current FY	Project Total
Construction Expenses	\$ 4,413,019	\$ 6,384,718
Fees	44,956	821,118
FFE	19,705	19,705
Technology	10,868	
Misc (Testing, Surveying)	1,000	8,341
Site Work	<u>13,589</u>	<u>161,958</u>
Total	\$ 4,503,137	\$ 7,395,839

---

## Silver Ranch Elementary School

	Current FY	Project Total
Construction Expenses	\$ 4,405,475	\$ 6,436,945
Fees	50,553	249,066
FFE	3,622	3,622
Technology	10,868	
Misc (Testing, Surveying)	1,000	4,391
Site Work	<u>-</u>	<u>208,673</u>
Total	\$ 4,471,518	\$ 6,902,697

---

## Legacy High School Addition

	Current FY	Project Total
Construction Expenses	\$ -	\$ -
Fees	88,871	88,871
FFE		-
Technology		
Misc (Testing, Surveying)	2,305	2,305
Site Work	<u>-</u>	<u>-</u>
Total	\$ 91,176	\$ 91,176

---

## CTE Project

	Current FY	Project Total
Construction Expenses	\$ -	\$ -
Fees	49,000	49,000
FFE		-
Technology		
Misc (Testing, Surveying)		-
Site Work	<u>-</u>	<u>-</u>
Total	\$ 49,000	\$ 49,000

---

## Energy Project

	Current FY	Project Total
Payments	\$ 2,719,791	\$ 3,817,347
Total	\$ 2,719,791	\$ 3,817,347